



GAT MONTHLY MEMBERSHIP PROGRESS REPORT

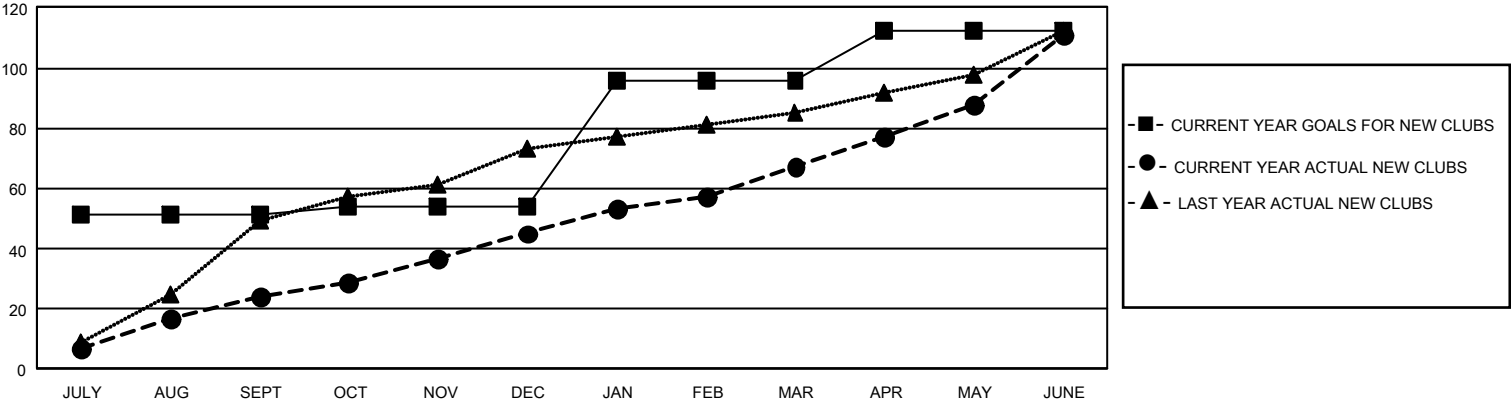
Results as of: 6/30/2025

GMT Constitutional Area 6 - I, Group E

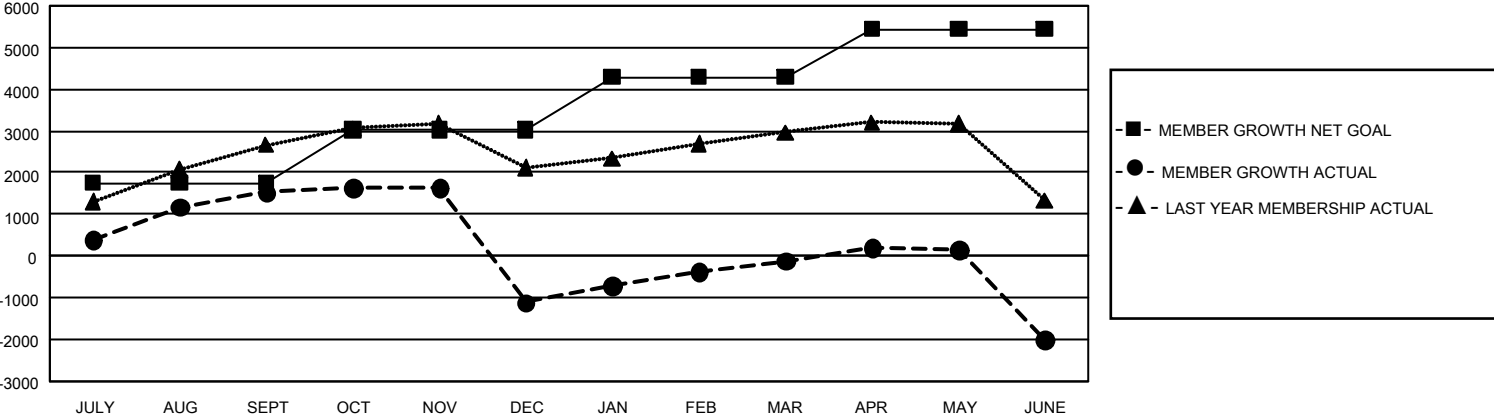
REPORT DOES NOT INCLUDE CLUBS IN UNDISTRICTED AREAS.

Clubs				Members			
RESULTS FOR 2024-2025				RESULTS FOR 2024-2025			
QUARTER	NEW CLUB GOAL	NEW CLUBS	DROPPED CLUBS	QUARTER	MEMBER GROWTH NET GOAL	MEMBER GROWTH ACTUAL	DROPPED MEMBERS ACTUAL (including transfers)
JULY/AUG/SEPT	153	24	8	JULY/AUG/SEPT	1753	3,174	1,354
OCT/NOV/DEC	9	21	112	OCT/NOV/DEC	1270	1,376	3,886
JAN/FEB/MAR	126	22	7	JAN/FEB/MAR	1270	1,947	549
APR/MAY/JUNE	48	44	26	APR/MAY/JUNE	1150	2,760	4,184

GOALS AND ACTUAL NEW CLUBS CUMULATIVE



GOALS AND ACTUAL MEMBERS CUMULATIVE



DROPPED CLUBS: 153		1,061 CLUBS OF 1,608 ADDED 1 OR MORE NEW MEMBERS	<u>GENDER DISTRIBUTION</u>	
<u>DROPPED MEMBERS</u>			MALE	37,075 (79.41%)
			FEMALE	9,609 (20.58%)
			NON BINARY	0 (0.00%)
DECEASED	205		PREFER NOT TO ANSWER	3 (0.01%)
CLUB CANCELLED	2,281	<a href="#">CLICK HERE FOR CUMULATIVE MEMBERSHIP DATA</a>	TOTAL FAMILY UNIT MEMBERS 14,132	
OTHER	7,463			
TOTAL	9,949		FAMILY MEMBERS PAYING HALF DUES 7,549	